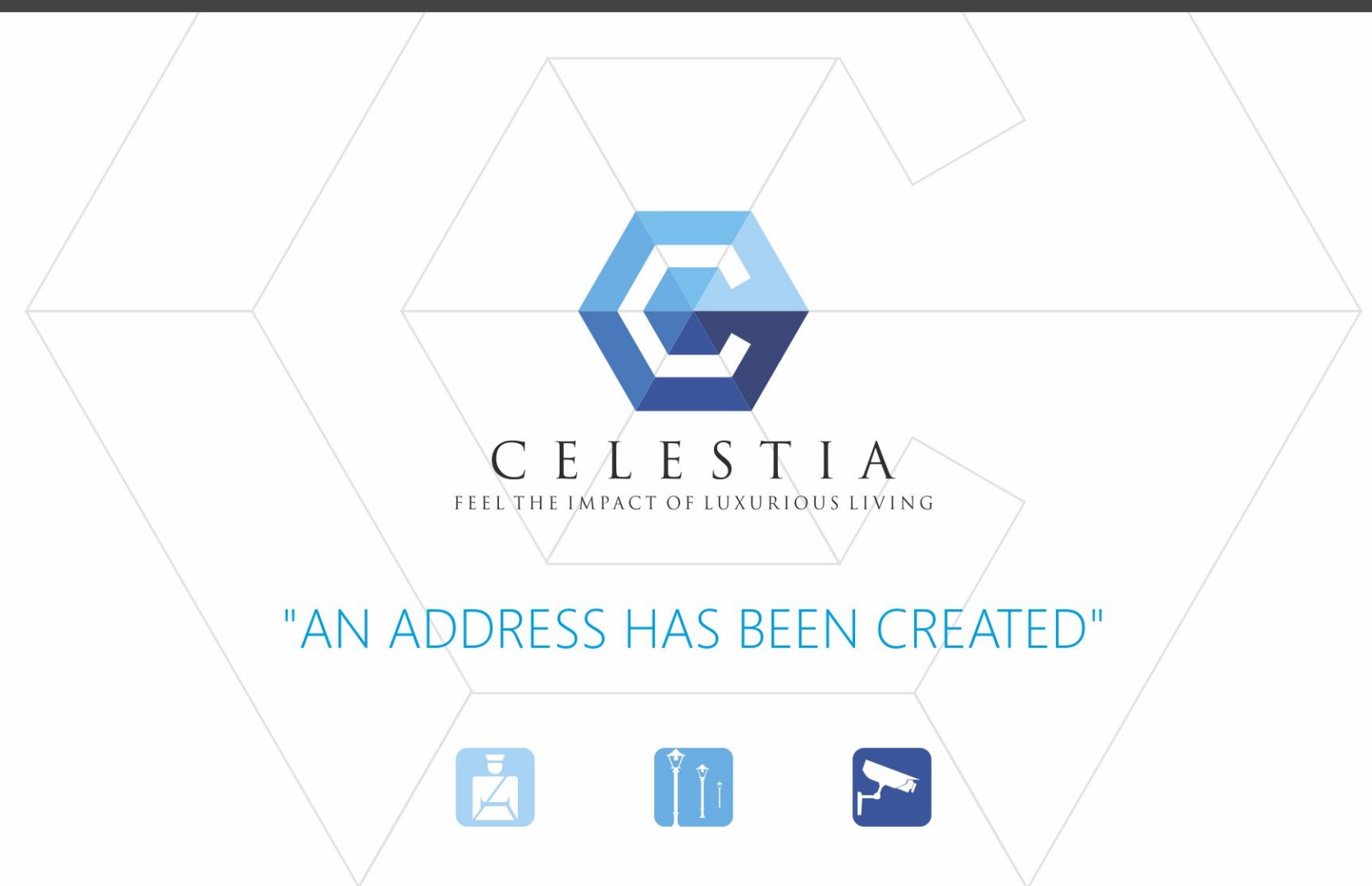


FEEL THE IMPACT OF LUXURIOUS LIVING



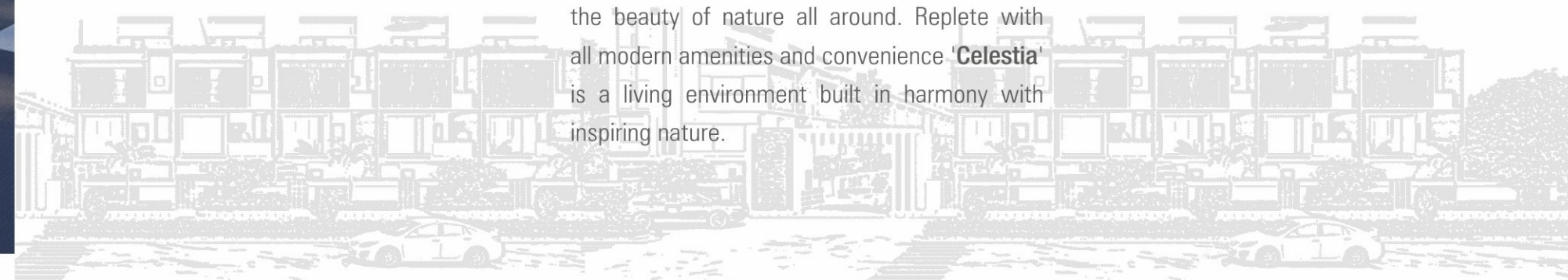
CELESTIA
FEEL THE IMPACT OF LUXURIOUS LIVING

Epitomizing a perfect blend of contemporary design and quality construction, 'Celestia' is a Villas by **Narayan Infra** located at Palanpur, Canal Road, Surat. Elegantly crafted Homes equipped with modern amenities and impressive features make a perfect dream home.



Located in Palanpur, Right on the Canal Road, 'Celestia' offers excellent connectivity and easy access to everything you may need. A morning jog or a quiet evening, you have everything within the compound.

Direction of each Home perfectly complements the beauty of nature all around. Replete with all modern amenities and convenience 'Celestia' is a living environment built in harmony with inspiring nature.





Layout Plan



EXPLORE ENDLESS HAPPINESS

Explore Endless Happiness

19 Ft. UNIT PLAN



Ground Floor



First Floor



Second Floor



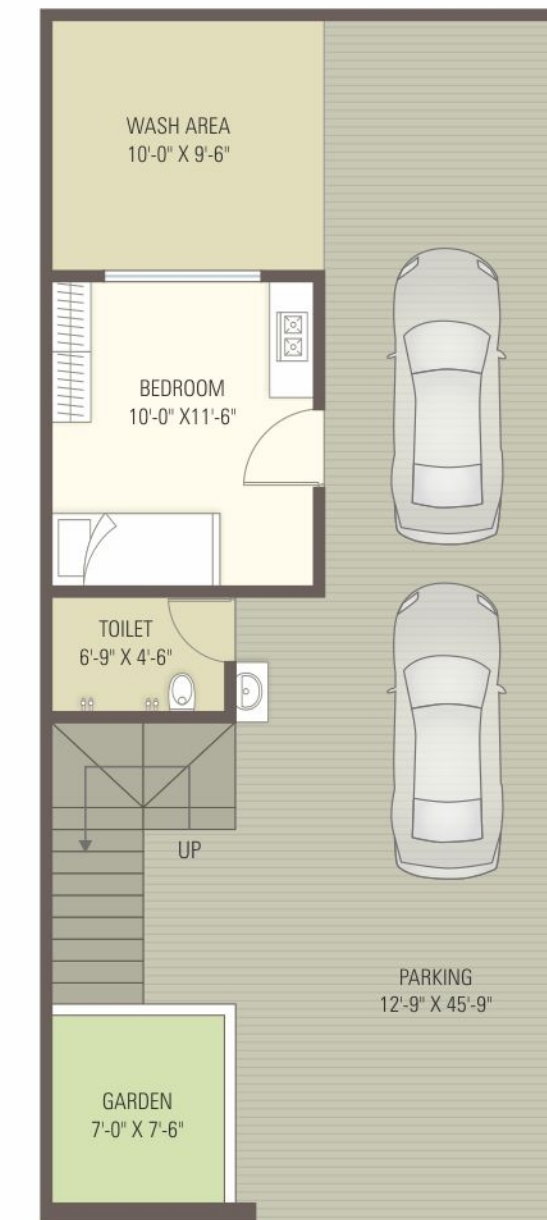
Third Floor



ENERGIZED WITH LUSH GREEN GARDEN

Energized with Lush Green Garden

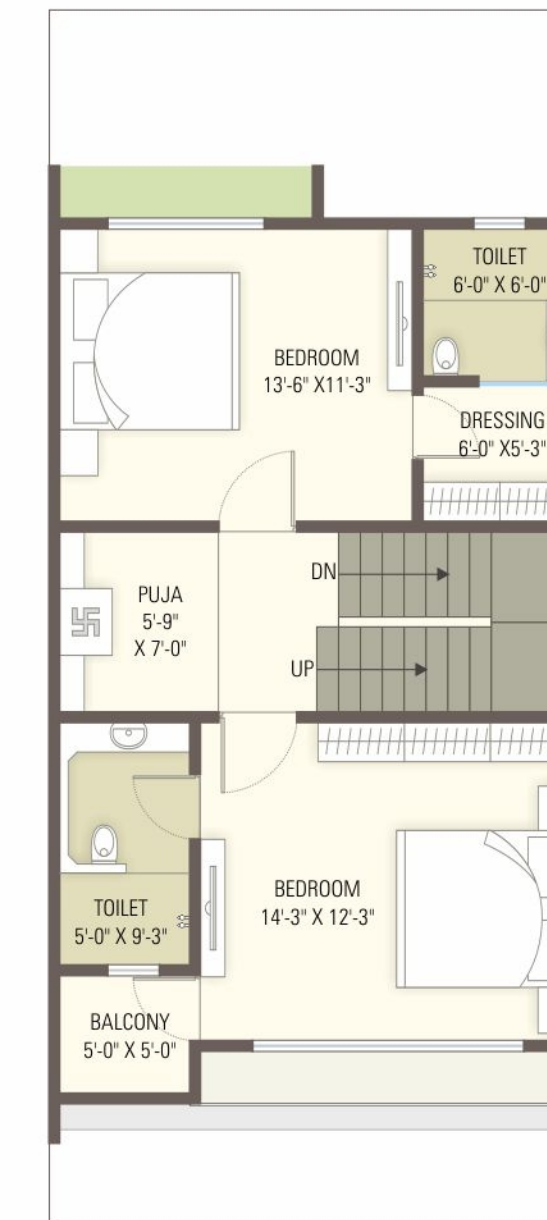
20' 6" Ft. UNIT PLAN



Ground Floor



First Floor



Second Floor

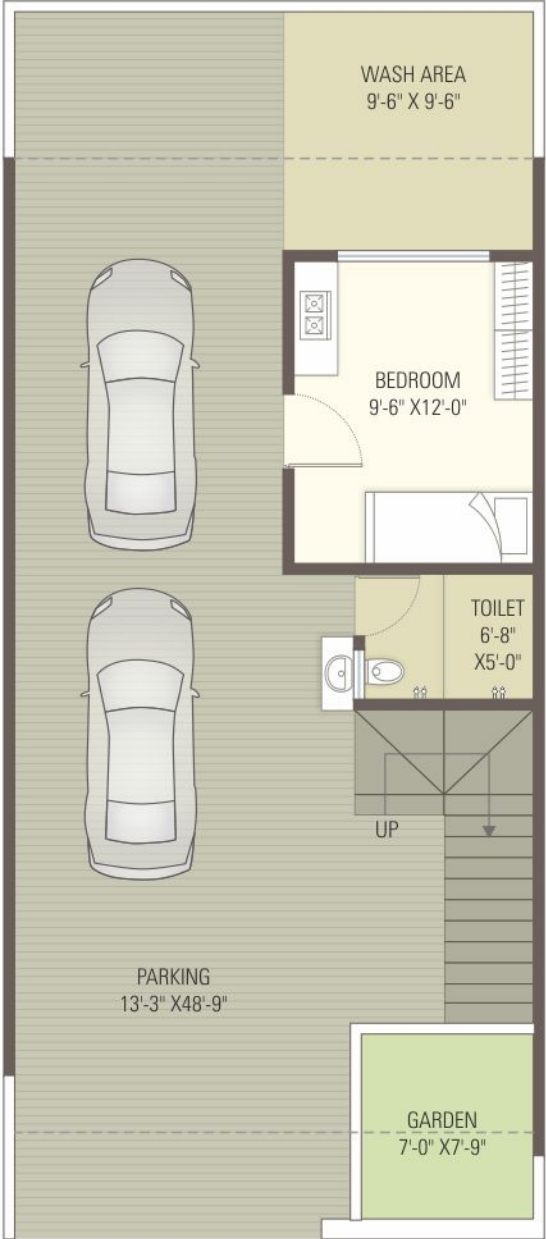


Third Floor

A LIFESTYLE HAS BEEN DESIGNED

A Lifestyle Has Been Designed

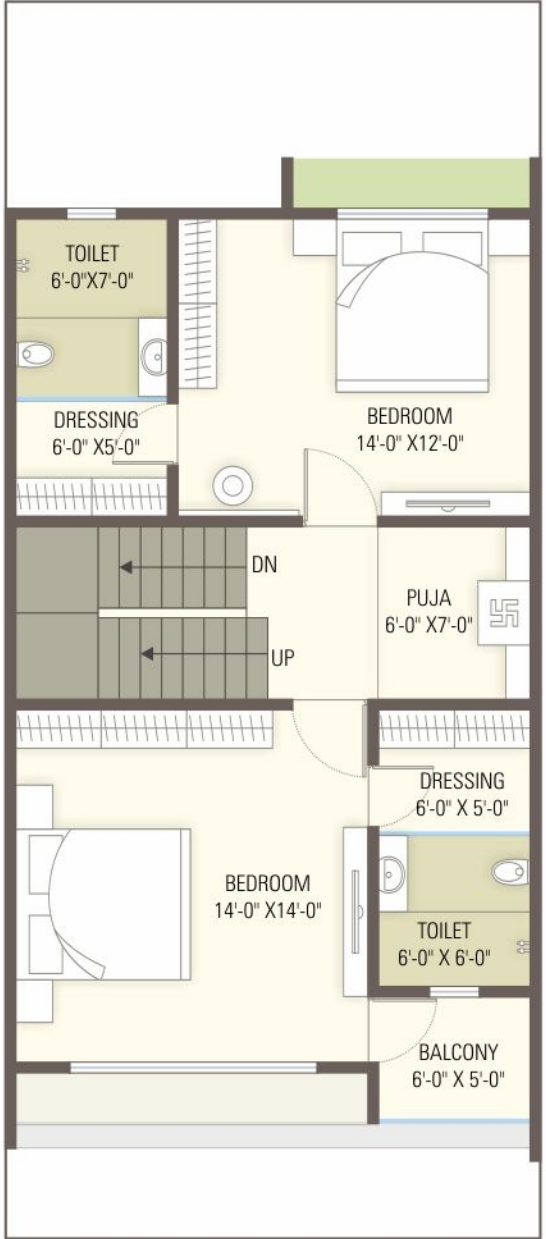
21' Ft. UNIT PLAN



Ground Floor



First Floor



Second Floor



Third Floor

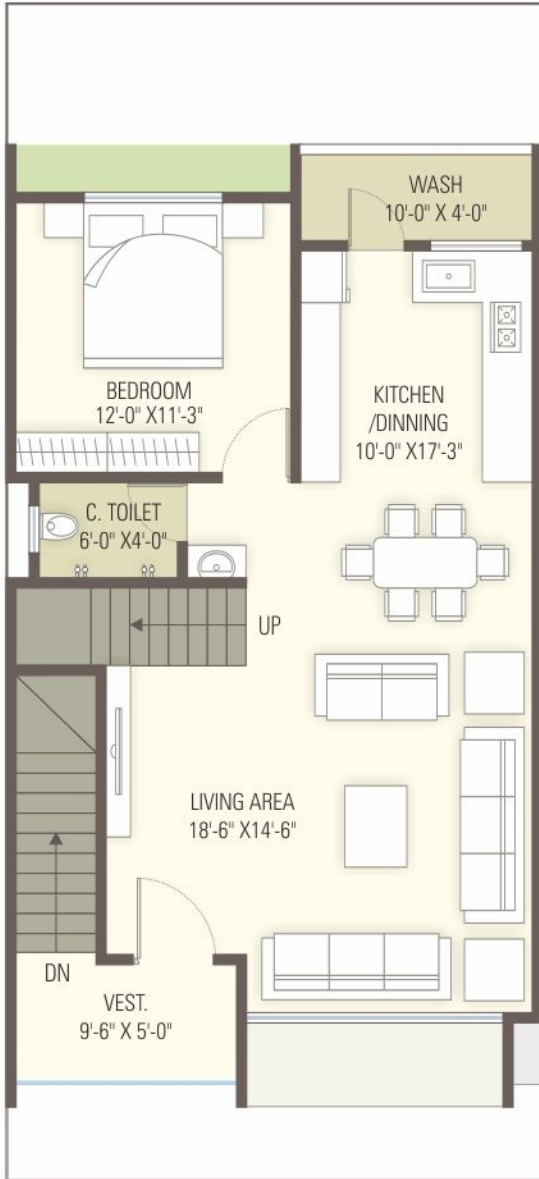
ENTRANCE TO THE CELESTIAL LIFE

Entrance to the Celestial Life

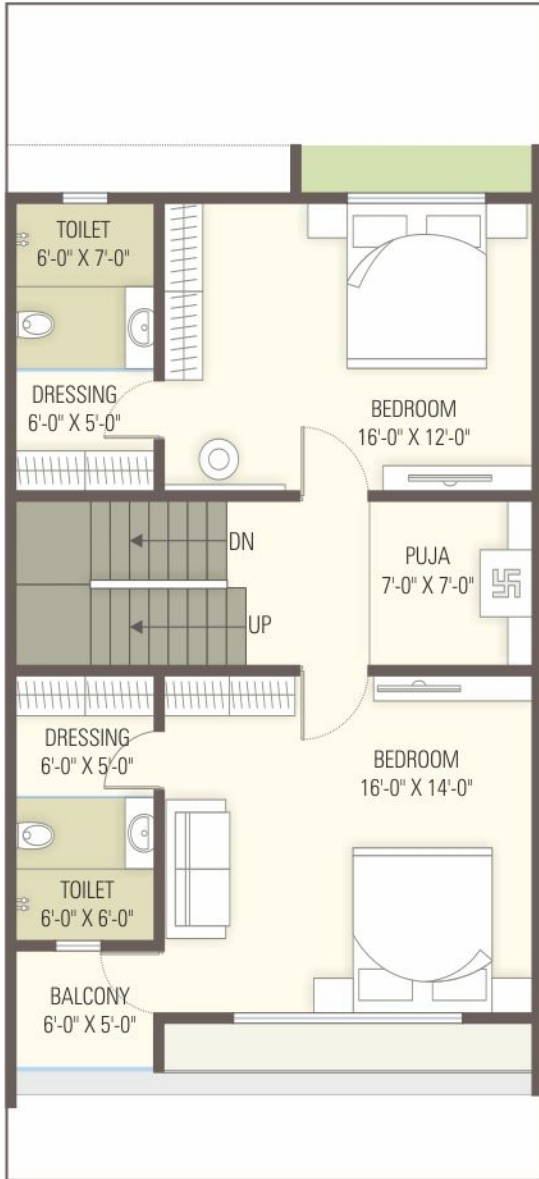
23' Ft. UNIT PLAN



Ground Floor



First Floor



Second Floor



Third Floor



EXISTANCE OF YOUR DREAM LIVING

Existance of Your Dream living



CLUB HOUSE

- A.C. Banquet Hall & Multi-Purpose Hall
- Kitchen Area
- Gymnasium with Equipment
- wi-fi zone
- Library
- Yoga Space
- Indoor Games (Table Tennis, Chess, carrom)

GARDEN & LANDSCAPE

- Lush Green Garden with Party Lawn
- Senior Citizen Area
- Water Body
- Sitting Benches
- Flower Valley & Vertical Garden
- Jogging Track
- Children Play Area

STRUCTURE

- R.C.C Frame Structure.
- Structure Design as per Code considering Earthquake Resistancy.
- Brick Masonary Wall With Double Coat Sand Face/Roller Finished Plaster.

DOORS & FRAME

- Main Door Frame in Teak Wood
- All Other Door Frame In Granite
- Attractive Main Door
- All other Doors water proof flush door with both side Laminated

WINDOWS & VANTILATORS

- Heavy Duty Alumminium Anodized Section and Granite Sill.
- Heavy Duty Safety Grill In Bright Bar.

FLOORING

- Living, Kitchen and Dining in 32"x32" or 24"x48" Nano finish Granamite.
- Wooden Flooring In One Master Bedroom .
- In All other floor area 24" x 24" Granamite.
- Wash Area in Kota stone

KITCHEN

- Platform in Natural/Composite Granite.
- Stanard Quality wall Tiling up to Lintel
- Glazed tiles below platform
- Carysil sink with drain board.
- Kota Rack in vertical store

BATHROOM & TOILETS

- Standard Quality Concealed Plumbing Fitting (Jaguar,Kohlar or eq.)
- Standard Quality Sanitary ware (Kohlar,Cera,Hindware or eq.)
- Concealed UPVC/CPVC Plumbing Work.
- Designer Granamite Tiles on wall and floor.

ELECTRICAL WORKS

- Concealed Copper Wiring (Polycab, RR Cables or eq.)
- AC point Provision in living room and Three Master bedrooms.
- Modular Switches With Sufficient Points (GM, Legrand, Anchor or eq.)
- Television Point in living and Three mastar bedroom
- Telephone & Internet plug point in living and three master bedroom.

BALCONY & OPEN TERRACE

- Stainless Steel Handrail with glass fittings As per design.
- China mosaic finish with two coat water proofing with chemical treatment on Terrace

PARKING

- Well Planned Ample Parking Space in Each Bungalow.
- Vitrified Matt Finished Tiles/Kota/Paver blocks.

GAS LINE

- One point for kitchen and One for geyser.

COLOURS

- Interior finish with Birla white putty.
- Exterior Paint in ICI/Asian Based Colours.

INFRASTRUCTURE

- R.C.C Trimix finish road with paver block.
- Sufficient Street Light Arrangement.
- Decorative Name Plate For Each Bungalow.
- Anti Termite Treatment in each Bungalow.

WATER

- Standard R.O.Water Purifier for Each Bungalow.
- SMC Water Connection For each Bungalow.
- Underground And Overhead Water Tank.

AIR CONDITIONING

- Provision of conceled AC Piping in living and Three Master bedrooms.

SECURITY

- Attractive Main Gate & Compound wall.
- Security cabin with 24x7 security Guard.
- Video door phone for each bungalow.
- Individual security System With CCTV Camera.
- Intercom Facility.

NOTES-

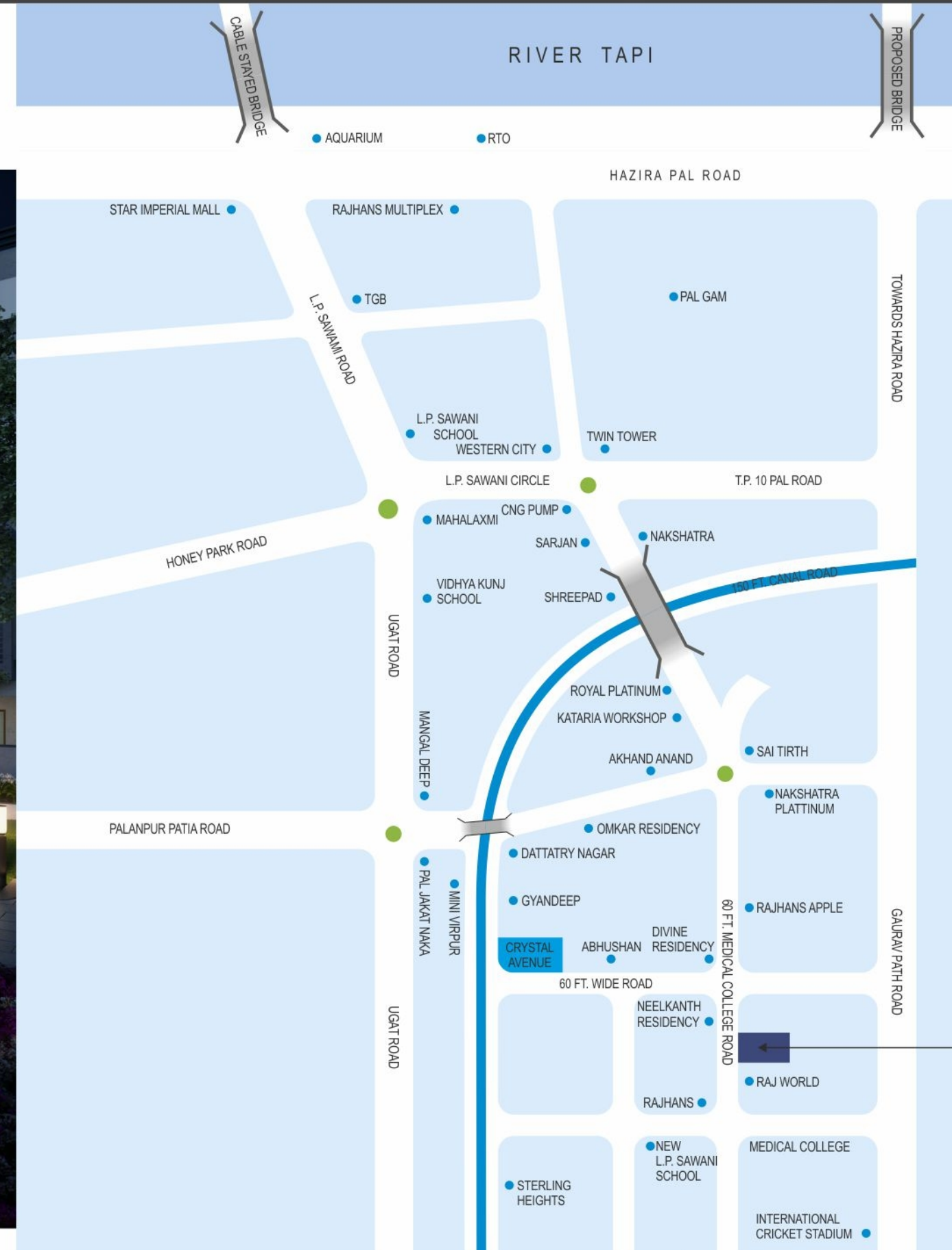
- All rights are reserved by the developer.
- Legal charges stamp duties, registration charges, G.E.B., S.M.C., Service tax, Suda& Gas connection charges etc. to be borne by the members.
- Rights reserved by the developers to make any changes in plan, elevations and other details which will be binding to all the members.
- Internal R.C.C. structure shall not be allowed to damage by members and also external changes shall not be allowed.
- Subject to surat jurisdiction.
- Any new taxes announced by the government/S.M.C/Authority will be borne by the member/buyer during the project.
- This information book is the property of developer. Cannot be used as legal document or reproduce without their permission.
- Changes in services of individual units will not be permissible.
- This brochure is only for private circulation for general information to the members and shall not form a part of any agreement. It can be changed without prior notice.

EXISTENCE OF YOUR DREAM LIVING

Existence of Your Dream living



KEY PLAN



Near By Places

- International Stadium 0.9 km
- BRTS Canal Corridor walking distance 200 ft.
- Gaurav Path walking Distance
- Botanical Garden 2 km
- Cable-Stayed Bridge in just 3 km
- Near by School, Hospital, Shopping Mall, Vegetable Market.
- Medical College 1.5 km



CELESTIA

Architect
ada
Architects & Urban Designers
0261 - 2551333

Structure

Shilp Sadhna

Landscape

Design Ritmo

Legal Advisor

G R Patel

Site Address

'Celestia'

Opp. Nilkanth Residency,
Near New L.P. Savani School,
Palanpur, Canal Road Palanpur, Surat.

Contact No

+91 991 313 2000



